

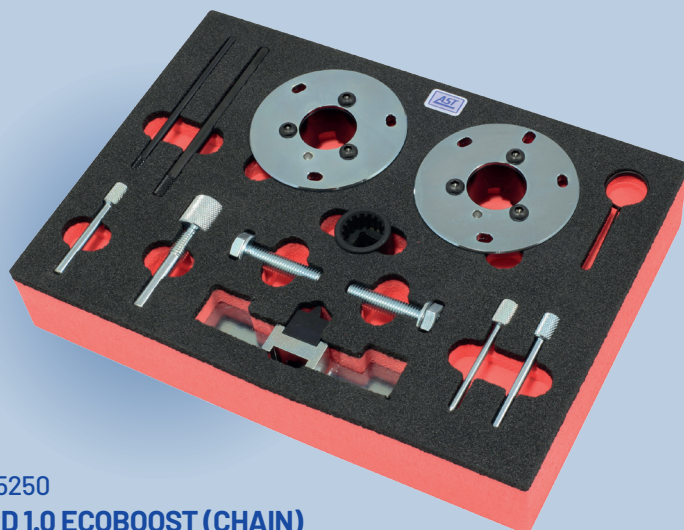
TOOLS FOCUS

NEW TO RANGE WORKSHOP ESSENTIALS



Designers and manufacturers of
Automotive Special Service Tools

FEBRUARY 2024

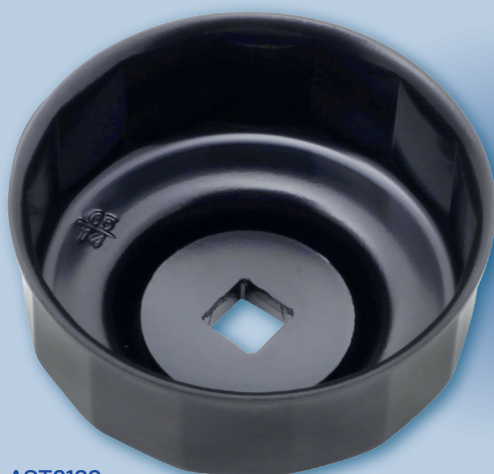
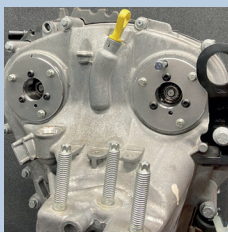


AST5250 FORD 1.0 ECOBOOST (CHAIN) PETROL/MHEV ENGINE SETTING/ LOCKING KIT

The engine setting/locking kit contains the tooling to cover the latest 1.0 Ecoboost chain engine.

Applications: C-Max, Fiesta, Fiesta Active, Focus, Focus Active, Grand C-Max, Puma, Transit Connect, Transit Connect Active

Equivalent to OE References: 303-1661/1 + 303-1661/2, 303-1661/3, 310-018, 303-1604, 303-1643, 303-732



AST6188 OIL FILTER WRENCH - 65MM X 14 FLATS - JAGUAR / LAND ROVER 2.0L INGENIUM DIESEL & PETROL ENGINE

- Integrated 3/8" square drive
- The oil filter housing cap has a torque setting of 25Nm.
- Suitable for motorcycle applications

Other Applications include: Daihatsu, Fiat, Ford Mondeo (MZR), Lexus, Mazda, Nissan, Subaru, Toyota

Motorcycle Applications: Honda, Kawasaki, Polaris, Triumph, Yamaha

Equivalent to OE Reference: JLR60346



AST6165 LOCKING WHEEL NUT / BOLT REMOVAL KIT - BMW - FORD - OPEL/ VAUXHALL - PSA - VAG - VOLVO

Provides a method of removing locking wheel nuts / bolts when the specialist key is not available.

Simple operation: Select one of the 5 adaptor sizes from the kit, locate the adaptor on the head of the bolt and use the supplied impact driver to release the locking wheel nut.

Suitable for McGard style locking wheel nuts and bolts.



AST6228 WHEEL NUT / BOLT 4 IN 1 COMBINATION SOCKET - 17mm, 19mm, 21mm, 22mm

This adaptable 4 in 1 socket features spring loaded 17mm and 19mm hexagonal drives that slide back into the body of the socket to reveal spline forms suitable for use on 21mm and 22mm hex nut and bolt heads.

Comprises:

- 1/2" Drive socket - 17mm and 19mm Hex drive & 21mm and 22mm Spline drive
- Use the included 3" long extension bar to connect to ratchet, power bar or torque wrench.



www.asttools.co.uk



+44 (0)1527 522550



sales@asttools.co.uk